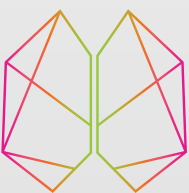




**GO DISTAL...
MORE TRACKABILITY
FOR MORE SUPPORT^{a1,2}**



CERENOVUS

PART OF THE **Johnson & Johnson** FAMILY OF COMPANIES

CEREBASE™ DA
guide sheath

ENGINEERED TO SECURE DISTAL ACCESS FOR GEOMETRIC ANCHORING^{b1,2,4}

8F Short Sheath Compatible²

Available in 80, 90, and 95cm lengths

MORE SUPPORT^{b1,2}

ENGINEERED TO SECURE DISTAL ACCESS FOR GEOMETRIC ANCHORING, RESULTING IN MORE PROCEDURAL SUPPORT.^{b1,2,4}

FEATURES:

- More proximal shaft stiffness designed for arch support^{c2}
- More procedural support^{b1,2,4}

Dexterous (DEX) Tip facilitates tight turns^{1,2,4}



Large Inner Diameter ID (.090")^{1,2}

MORE TRACKABILITY^{a1,2}

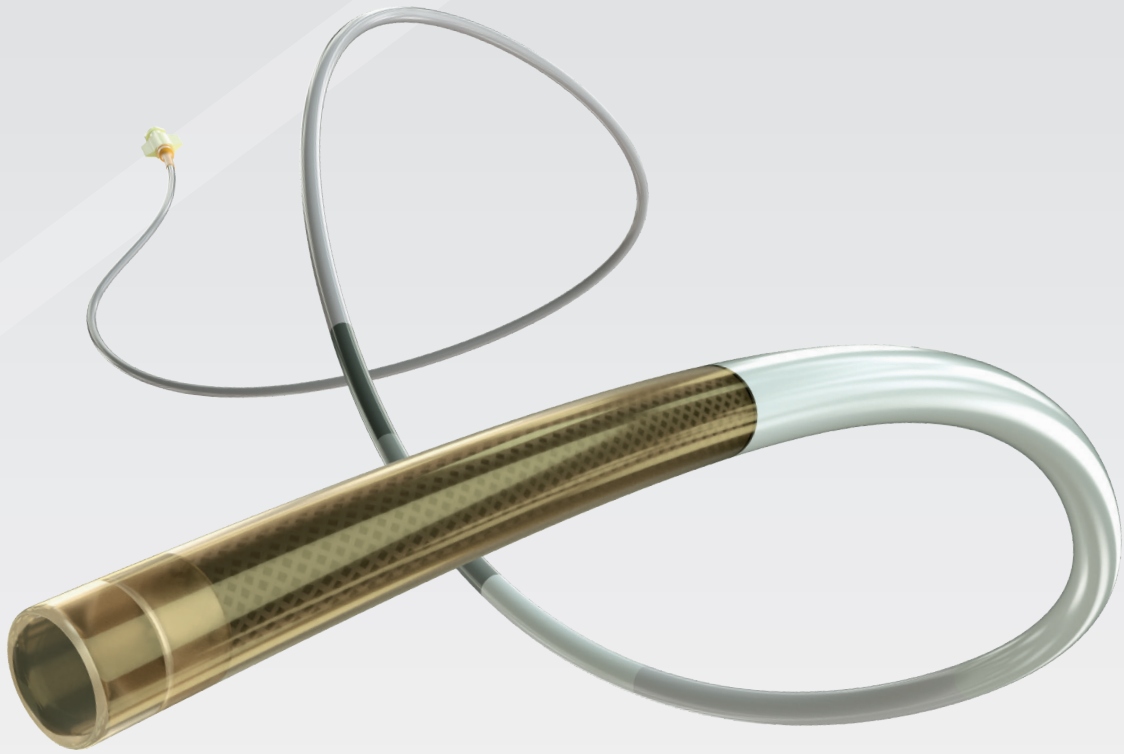
DEX TIP FACILITATES TIGHT TURNS (SMALL TURNING RADIUS), PROVIDING TRACKABILITY TO DISTAL ANATOMY^{1,2,3}

FEATURES:

- DEX Tip - short, flexible and soft^{a1,2,3}
- Soft and compliant, rounded distal edges²
- Flexibility of the CEREBASE™ DEX Tip is similar to the flexibility of an aspiration catheter^{1,2,3}
- Smooth transition zones for pushability²
- Excellent kink resistance^{e2}

CEREBASE™ DA

guide sheath



CEREBASE™ DA Guide Sheath

Product Code	ID	OD (compatible short sheath)	Usable Length
GS9080SD	0.090"	8F	80cm
GS9090SD	0.090"	8F	90cm
GS9095SD	0.090"	8F	95cm

- ^a CEREBASE™ Sheath has demonstrated more trackability and more support when compared to the four leading selling competitor long guide sheaths. CEREBASE™ has demonstrated more support when compared to one leading selling competitor long guide sheath.
- ^b CEREBASE™ Sheath has demonstrated more support when compared to five leading selling long guide sheath competitors when placed in a distal cervical position.
- ^c CEREBASE™ Sheath has demonstrated more shaft stiffness when compared to five leading selling competitors long guide sheaths.
- ^d CEREBASE™ Sheath has demonstrated that its distal tip is shorter, more flexible and softer than five leading selling competitor long guide sheaths.
- ^e CEREBASE™ Sheath has demonstrated more kink resistance than five leading selling competitor long guide sheaths.

¹ CERENOVUS, Competitive Test Report #103618595 Rev.2, April 2020, Data on file
² CERENOVUS, Competitive Test Report #10364599 Rev.1, April 2020, Data on file
³ CERENOVUS, Competitive Test Report #103628641 October 2019 (Aspiration Catheter), Data on file
⁴ Turk A, Manzoor MU, Nyberg EM, et al. Initial experience with distal guide catheter placement in the treatment of cerebrovascular disease: clinical safety and efficacy. J Neurointerv Surg. 2013 May;5(3):247-52. doi: 10.1136/neurintsurg-2011-010256. Epub 2012 Mar 13

Johnson & Johnson Medical Limited
 Baird House, 4 Lower Gilmore Bank,
 Edinburgh,
 EH3 9QP
 United Kingdom

Legal Manufacturer:
 Medos International SARL
 Chemin-Blanc 38
 CH-2400 Le Locle
 Switzerland

Important information: Prior to use, refer to the instructions for use supplied with this device for indications, contraindications, side effects, warnings and precautions.
 This publication is not intended for distribution outside of EMEA
 © CERENOVUS 2021. 161748-201204 EMEA



CERENOVUS
 PART OF THE **Johnson & Johnson** FAMILY OF COMPANIES